

# SenSonic

## Temperature Measuring System



### Measuring temperature in processpipes without welding in a sensor pocket

**M12 industri-connector**

**2-wire transmitters**

**Quick setup from standard PC over connector pins with  
PR Loop Link 5905 communication interface**

### Transmitter types:

#### **Standard:**

STT1000FSA (PR 5333A)

STT1000FSB (PR5333D/ ATEX)

#### **Insolated:**

STT1000FIA (PR 5331 A3B)

STT1000FIB (PR5331 D3B / ATEX)

#### **Hart Protocol Insolated**

STT1000FHA (PR 5335A)

STT1000FHB (PR5335D / ATEX)

#### **Profibus PA and Foundation Fieldbus**

STT1000FPA (PR 5350A)

STT1000FPB (PR 5350B ATEX)

### Technical data:

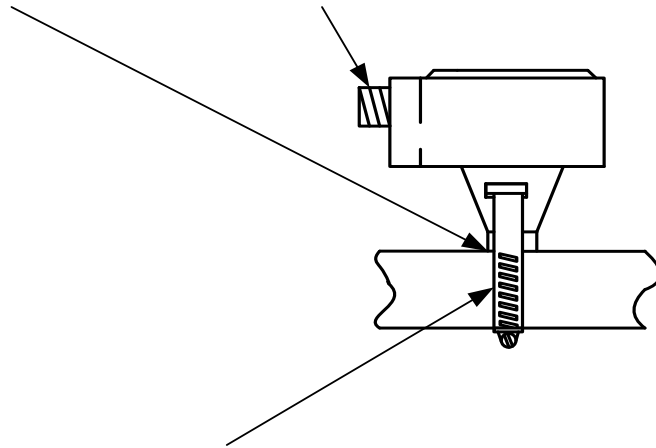
PT100 sensor	: Class 1/3 Din B curve
Where accuracy in °C is better than $\pm (0,1 + (\text{measured temperature} \times 0.0017))$	
Span	: -40 til 180°C
Ambint temperature (TA)	: -30 til 85°C
Output / consumption current	: 4 til 20 mA
Enclosure	: IP68
Accuracy	: $\pm 0,25\%$ F.S. $\pm 0,2$ °C
Measuring error due to thermal loss (typ.): Measured value -0,35%	
Adjusted during the setup of the sensor, (eg span 0-100, set span to 100-0,35% = 99,65)	

Measure on pipes with dimensions from 4DN and upwards. From 4DN to 8DN a special centering -and insulating adapter type ADPT-04, should be used.  
Other data depends on electronic unit

## Mounting Instructions:

Heat conducting paste, type HTSP (-50 to 200°C), is applied to the sensor before mounting it on the process pipe (about 0,01 m.l.)

M12 connector (pin 1= +, pin 2 and pin 3 = -).



**Fasten the sensor to the process pipe** with steel-stringband (Cut off length = circumference of the pipe + 30 m.m.).

The stringband have to be tightend, so that the sensor is absplute fastened to the process pipe.

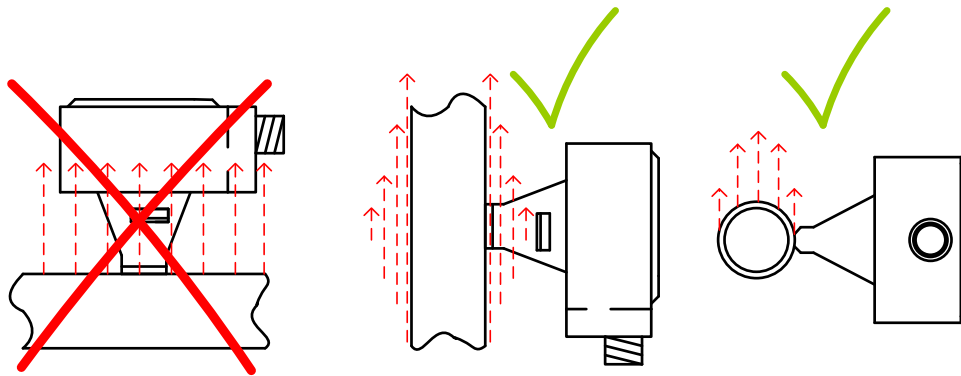
**Mounting Bracket type SHRS-1000 is recommende (FDA)**, if the sensor regularly and quickly has to be dismantled and remounted, in exactly the same position.(see mounting accessories on [www.sensonic.dk](http://www.sensonic.dk))

At temperatures below 70°C, you can use standard plastic cable stringbands.

### High temperatures:

When mounting onto a procespipe, where the temperature exceeds 130°C, follow the instructions on the drawing below, to avoid overheating of the unit.

If the pipe is insulated, keep the electronic part outside the insulation.



### Mechanical dimensions mm :

